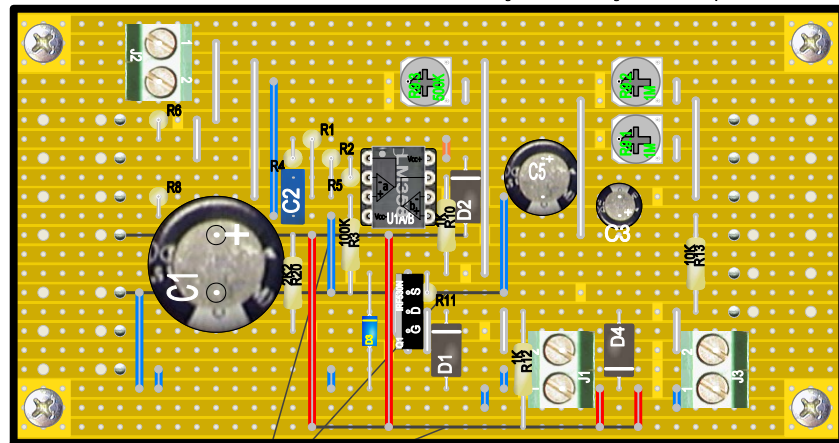


Analog Model Train Speed Controller (Ron Hoffman)

<https://www.gadgetronicx.com/diy-model-train-controller-project/>

Voltmeter +
SOLL
Voltmeter -
Pot-meter (right)
Pot-meter (center)
Pot-meter (left)
Power (12VDC)
Power GND
Power LED +
Power LED -



43 x 22

1...6 = 5-way "Electric guitar" lever switch (or 5 pos. rotary switch)
or use the 5 way "Electric guitar" lever switch adapter

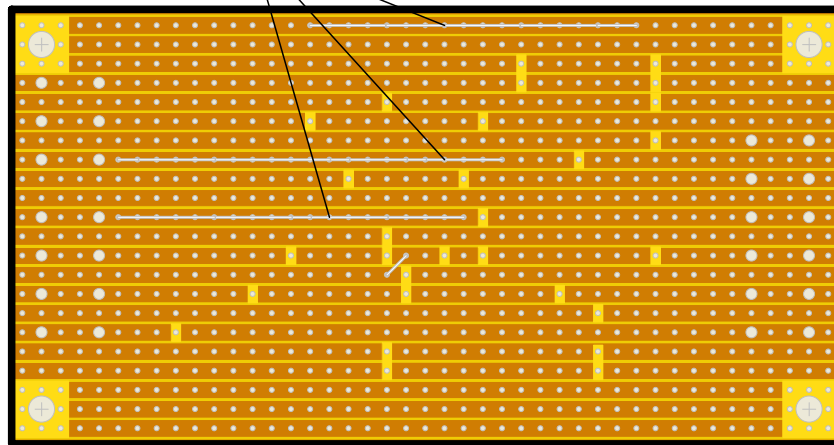
A connection is made under U1A/B between pins 2 and 6

J1: To "Forward - Stop - Reverse" switch

R9.2: Braking deceleration timing
R9.1: Speed control acceleration/deceleration timing

1. Speed Control (no accel/decel)
 2. Speed Control (with accel/decel)
 3. Brake
 4. Heavy Braking
 5. Emergency Stop
 6. Selector
- Voltmeter +
IST
Voltmeter -

Extra wires are soldered to the power lines



Analog Model Train Speed Controller (Ron Hoffman)