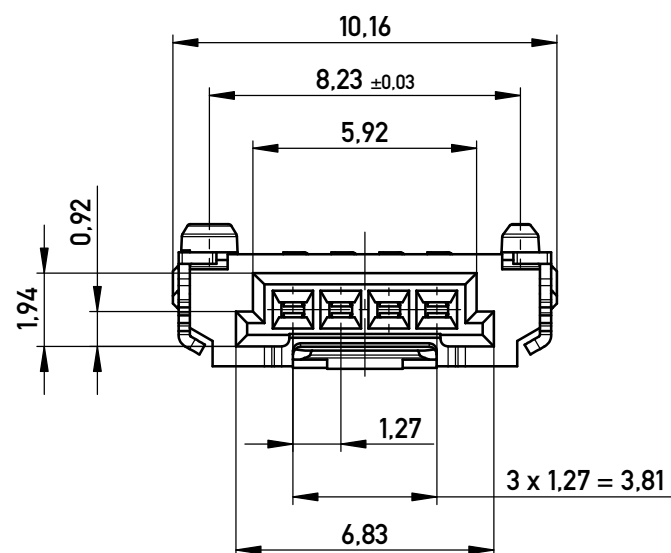
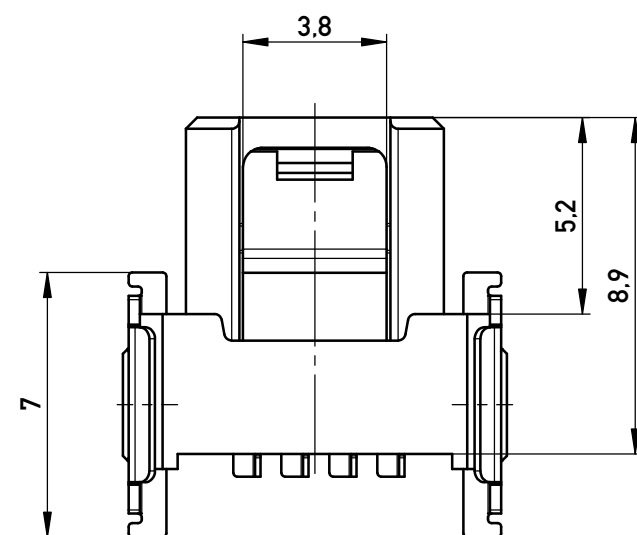
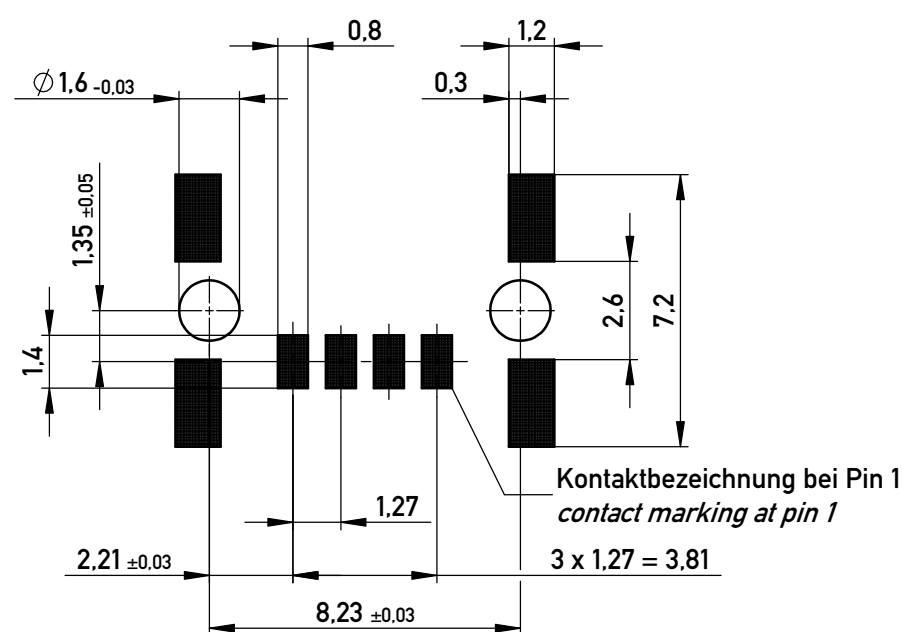


Leiterplatten-Layout Vorschlag für SMT

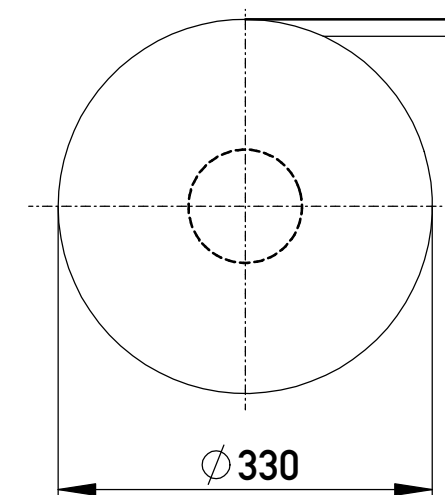
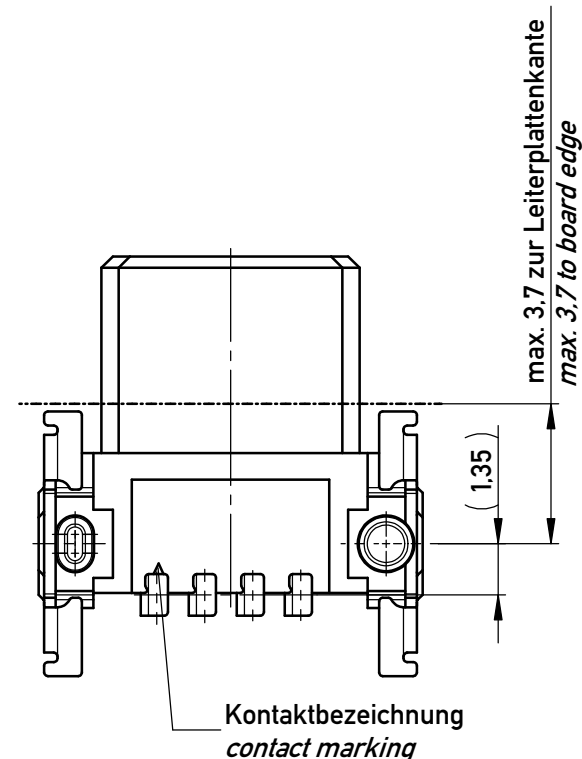
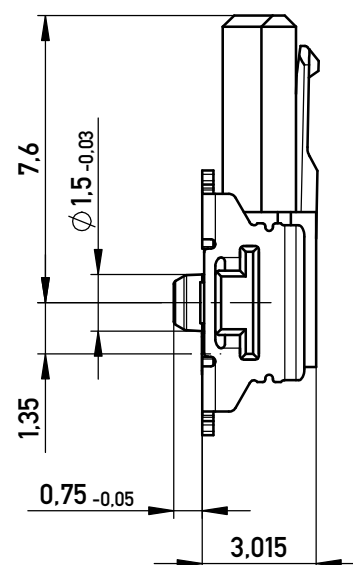


Anforderungsstufe 1
Performance Level 1

Kontaktbereich vergoldet
Mating Area gold plating

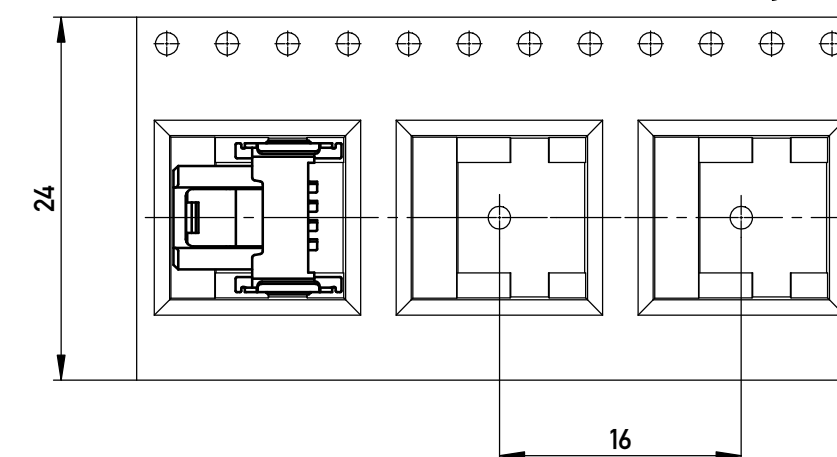
Anschlussbereich verzinnt 4-6 μm
Terminal Area 4-6 μm tin plating

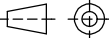

Koplanarität der Anschlüsse $\leq 0,1 \text{ mm}$
Coplanarity Area of Termination $\leq 0,1 \text{ mm}$



Verpackt im Gurt in Anlehnung an DIN IEC 60286-3
Tape on Reel Packaging according to DIN IEC 60286-3
 Verpackungseinheit: 850 Stück
Packaging unit: 850 pcs

Abspulrichtung - *Reel off Direction*



				mit Verriegelung	
				with locking mechanism	
Information: ohne Hilfsmittel lösbar <i>without tool unlockable</i>			Tolerances	 All Dimensions in mm	Scale 5:1
All rights reserved. Only for Information. To ensure that this is the latest version of this drawing, please contact one of the ERNI companies before using.			Subject to modification without prior notice. Drawing will not be updated.		Designation F 1,27 SRC P, 4-polig BA1
				www.ERNI.com	364485
b		15.07.2015			I
Index		Date		Class	A3
				SRCP	